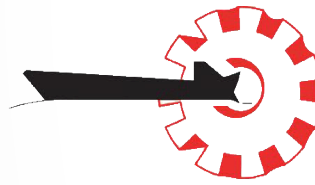


دبي للهندسة و صناعة السفن
Dubai Ship Building & Engineering



**ISO 9001
ISO 14001
ISO 45001**

BUREAU VERITAS
Certification

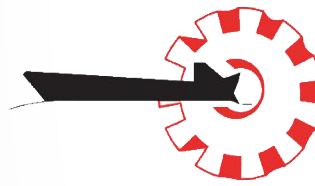


Company Profile

Ship Repair Division

دبي للهندسة و صناعة السفن

Dubai Ship Building & Engineering



Overview

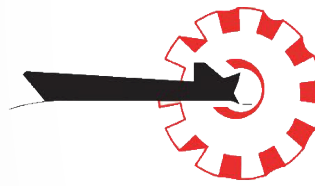
Over the years, the company have been executing repair and conversion works for the following types of vessels:

- a) Accommodation / Cable Laying Barges
- b) Accommodation Barges
- c) Anchor Handling Tugs (with DP2)
- d) Offshore Supply Vessels (with DP2)
- e) Tugboats
- f) Workboats
- g) Landing Crafts
- h) Pontoons
- i) Ferries, Water Taxis and other sea transportation vehicles from RTA
- j) Cable storage heavy load ships

Being in a strategic location in the Middle East coastline, we offer whole spectrum of marine repair services as listed below:

- Afloat Repairs & Dry-docking Services
- Major Refurbishment & Conversions
- Engine Repairs & Component Reconditioning
- Pump & Auxiliary Equipment Repairs
- Steel Fabrication and Construction
- Deck Machinery, Hydraulic & HVAC Services
- Propulsion Systems
- Automation and Instrumentation Services

دبي للهندسة و صناعة السفن Dubai Ship Building & Engineering



Dry-docking Services

The services offered are based on using the facilities of DMC Dubai. The dock can accommodate various types of vessels as per following parameters:

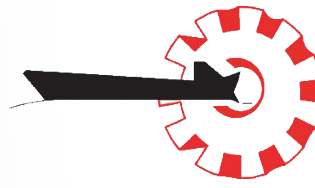
- a) Lifting capacity - up to 6,000 t;
- b) Length - up to 130 m;
- c) Width - up to 35 m;
- d) Total of 10 wet berths with 1510 meters of berthing space and "Y" berth for berthing yachts
- e) Crane Barge with a lifting capacity of 400 metric tons, used for launching of small crafts;

Our services are, but not limited to:

- Agency assistance in docking / undocking of vessels;
- Complete project management of the repairs;
- Fire and safety support during repair of ships;
- Supply of basic media needed for the process of repairs like electric power, compressed air, water, ventilation, etc.
- Lifting and transportation equipment support;
- Tank cleaning and sludge or garbage disposal;
- Hull treatment including hydro blasting anti fouling coating, cathode protection, etc.
- Propeller and rudder repairs;
- Full gamma of steel fabrication, pipe repairs, deck machinery and cargo gears repair and recertification;
- Diesel engine and all sorts of related mechanical repairs;
- Auxiliary units repairs;
- Repair of ships alongside, afloat and on voyage;
- Major refurbishments and conversions;

دبي للهندسة و صناعة السفن

Dubai Ship Building & Engineering



ISO 9001
ISO 14001
ISO 45001
BUREAU VERITAS
Certification



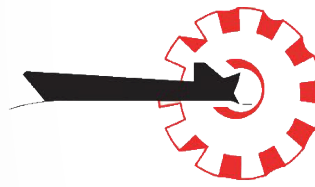
Automation and Instrumentation Services

The following services are offered:

- Main engine alarm and control system;
- Generator alarm, synchronization and protection system;
- Oily water separator and bilge alarm system;
- Crane and winch control system;
- Main switch board automation;
- Bow thruster and steering gear controls;
- Fire alarm system;
- Main and auxiliary engine oil mist detection system;
- Servicing of switch gear and instrumentation panels;
- Bridge and navigation systems;
- Draught gauges;
- Troubleshooting of Electrical and Automation systems;



دبي للهندسة و صناعة السفن Dubai Ship Building & Engineering



Quality Management System

Dubai Shipbuilding & Engineering L.L.C. has developed a quality management system with the intention to satisfy the defined needs and expectations of its customers and to continuously improve the quality of its workmanship and services for total customer satisfaction. The quality management system was based on the International Standard ISO 9001: 2008.

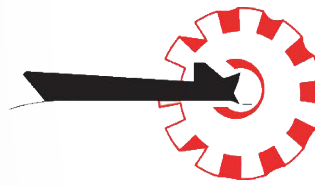
The quality policy of Dubai Shipbuilding & Engineering L.L.C is based on Total Quality approach to meet the customer and applicable regulatory requirements for Quality, Technical Competences and Delivery Schedules in Shipbuilding, Conversions and Ship Repair activities.

Obtaining Zero defect is the eventual aim of the company as it continuously attempt to improve its areas of quality procedures and quality control.

The Quality System Procedures detail the responsibilities & administrative methodology for performing various processes & tasks and their related controls to assure conformance to the quality requirements and define how the requirements of applicable clauses of ISO 9001 are applied to the services. The circulation of these procedures is restricted to internal use within the company unless otherwise contractually agreed. A Quality Manual can be made upon request.

Quality control procedures are the administrative & technical methodology for managing the various processes and activities, the inspection & tests to ensure adherence to the quality standards, the absence of which may affect the product quality. These shall include the acceptance criteria, the records to be generated & the signatories for approval of the acceptance of the product I process.

دبي للهندسة و صناعة السفن Dubai Ship Building & Engineering



Facilities:



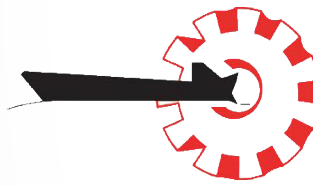
Jetty Dimension

L 150mtr X W 50mtr X D 16mtr

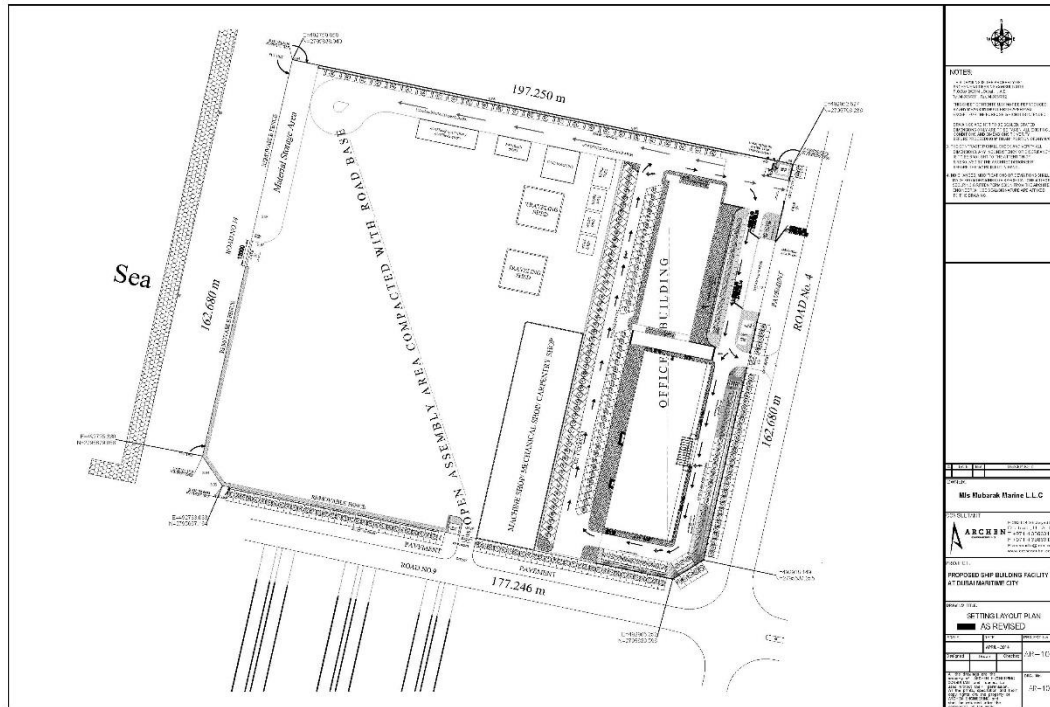


Main Office

دبي للهندسة و صناعة السفن Dubai Ship Building & Engineering

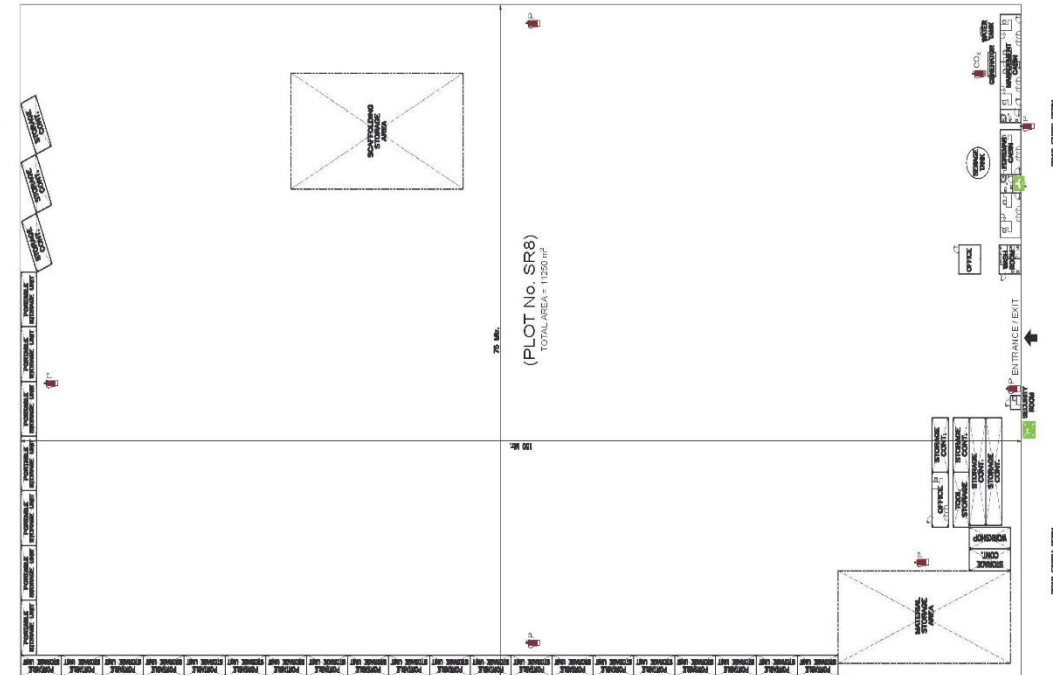


Facilities:



Yard Dimension Plot No. SR-15 SR-15 Yard

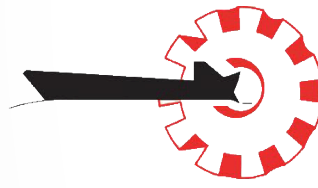
TOTAL AREA = 33,924 sqm



Yard Dimension Plot No. SR-8

TOTAL AREA = 11250 m2

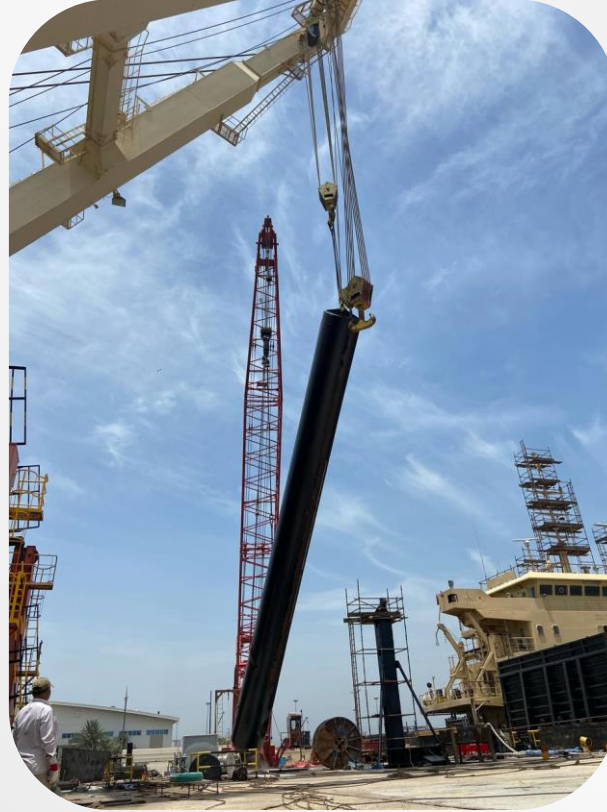
دبي للهندسة و صناعة السفن Dubai Ship Building & Engineering



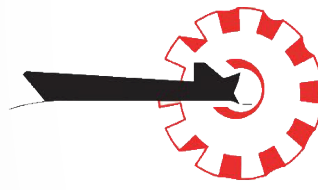
ISO 9001
ISO 14001
ISO 45001
BUREAU VERITAS
Certification



Photos:



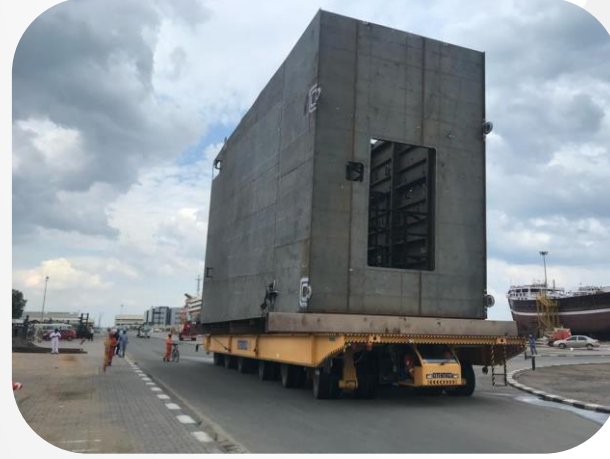
دبي للهندسة و صناعة السفن Dubai Ship Building & Engineering



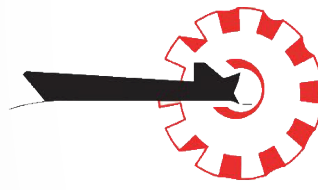
ISO 9001
ISO 14001
ISO 45001
BUREAU VERITAS
Certification



Photos:



دبي للهندسة و صناعة السفن Dubai Ship Building & Engineering



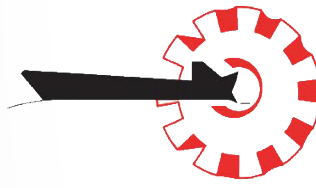
ISO 9001
ISO 14001
ISO 45001
BUREAU VERITAS
Certification



Photos:



دبي للهندسة و صناعة السفن Dubai Ship Building & Engineering



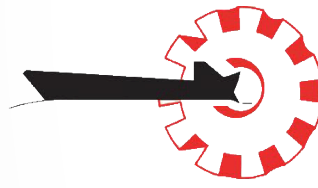
ISO 9001
ISO 14001
ISO 45001
BUREAU VERITAS
Certification



Photos:



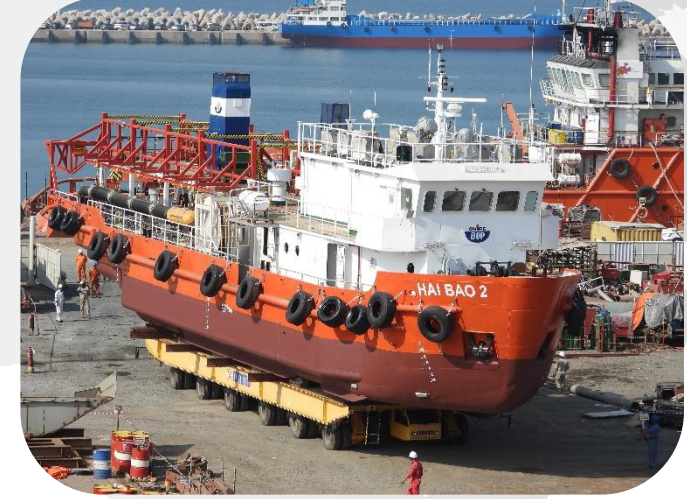
دبي للهندسة و صناعة السفن Dubai Ship Building & Engineering



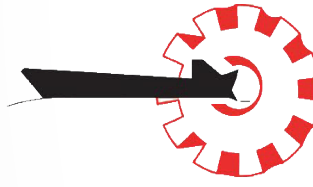
ISO 9001
ISO 14001
ISO 45001
BUREAU VERITAS
Certification



Photos:



دبي للهندسة و صناعة السفن Dubai Ship Building & Engineering



Equipment Facilities:



Manitowoc Crane 350 Ton

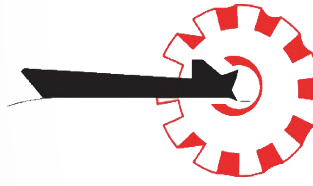


Grove Crane 55 Ton



Grove Crane 55 Ton

دبي للهندسة و صناعة السفن Dubai Ship Building & Engineering



Equipment Facilities:



Travel Crane 100Ton



COMETTO 315 Ton

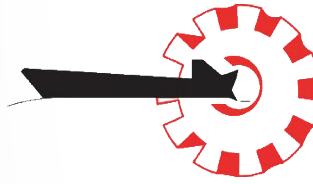


JCB Boom Loader 4Ton



Komatsu Forklift 5Ton

دبي للهندسة و صناعة السفن Dubai Ship Building & Engineering



ISO 9001
ISO 14001
ISO 45001
BUREAU VERITAS
Certification

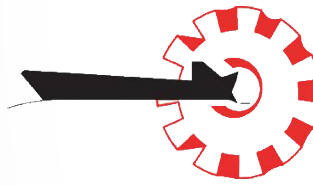


Workshop Facilities:

- LATHE MACHINE 1400mm
- LATHE MACHINE 3870mm
- LATHE MACHINE 2400mm
- LATHE MACHINE 2000mm
- LATHE MACHINE 1550mm
- LATHE MACHINE 6000mm
- LATHE MACHINE 3870mm
- LATHE MACHINE 9000mm
- LATHE MACHINE 2100mm
- LATHE MACHINE 2400mm
- MILLING MACHINE 800mm
- MILLING MACHINE 1400mm
- MILLING MACHINE 1270mm
- RADIAL DRILLING MACHINE 1580mm
- DRILLING MACHINE 800mm
- SHAPER MACHINE 630mm
- HORIZONTAL BORING MACHINE 1000mm
- POWER SAW CUTTING M/C 300mm



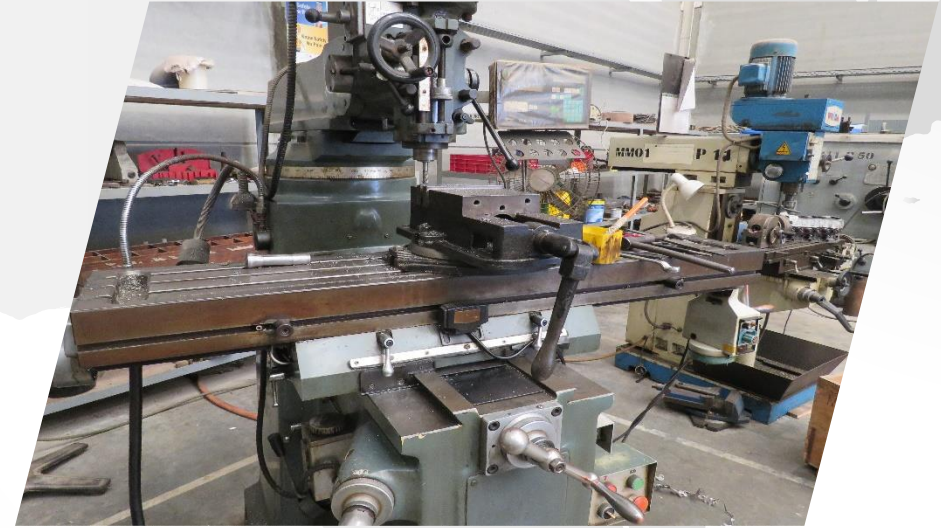
دبي للهندسة و صناعة السفن Dubai Ship Building & Engineering



Workshop Facilities:

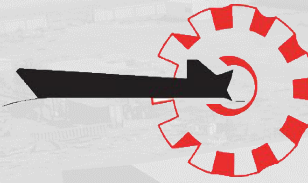
The following services are offered:

- Overhaul, repair and reconditioning of rotating and reciprocating equipment.
- Reconditioning of engine components.
- Fuel pumps and injectors reconditioning.
- Gearbox overhaul and repairs.
- Cleaning, testing, repair and reconditioning of heat exchangers.
- Valves refurbishment, repairs and testing.
- Fabrication and prefabrication of steel structures, piping, hatch covers and deck plates.
- Machining of various components. Shaft lengths up to 8 m can be accommodated.



دبي للهندسة و صناعة السفن

Dubai Ship Building & Engineering



ISO 9001
ISO 14001
ISO 45001
BUREAU VERITAS
Certification

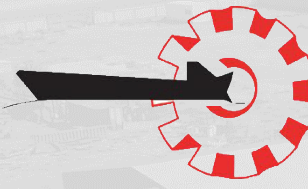


Workshop Facilities:

- CNC PROFILE CUTTING- ESAB 12000 X 2500 /THICKNESS: 300MM
- CNC PROFILE CUTTING – KELPE 100A 12000 X 3000 / THICKNESS: PLASMA 8MM GAS: 300MM
- CNC PROFILE CUTTING – KELPE HPR 130 A 15000 X 3000 /THICKNESS: PLASMA 25MM /GAS: 300MM
- BLASTING MACHINE 6 WHEEL /THICKNESS: UPTO - 100MM
- ROLLING MACHINE- BERLIK MAKINA WIDTH: 3000 /PRE BENDING : 20MM - ROLLING : 25MM
- ROLLING MACHINE- OMEGA WIDTH: 3000 /ROLLING : 6MM
- PRESS BRAKE- SOMO BL: 8000 /CAPACITY: 400 TON
- PRESS BRAKE- OMEGA BL: 3000 /THICKNESS: 6MM
- SHEARING MACHINE-OMEGA WIDTH: 3000 /THICKNESS: 8MM



دبي للهندسة و صناعة السفن Dubai Ship Building & Engineering



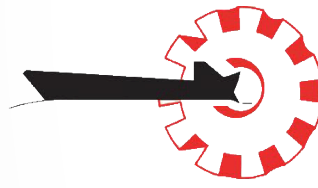
ISO 9001
ISO 14001
ISO 45001
BUREAU VERITAS
Certification



Workshop Facilities:



دبي للهندسة و صناعة السفن Dubai Ship Building & Engineering



ISO 9001
ISO 14001
ISO 45001
BUREAU VERITAS
Certification



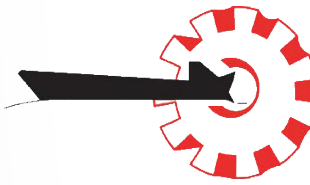
Carpentry Facilities in Al Jaddaf Dubai :

- We install marine approved insulation, wall, ceiling, door.
- We apply deck covering, vinyl & ceramic tile.
- We fabricate furniture like bed bunks, writing desk, wardrobe closet, cupboard, table top & kitchen cabinet.
- We fabricate fiber glass window & door frame.



دبي للهندسة و صناعة السفن

Dubai Ship Building & Engineering



ISO 9001
ISO 14001
ISO 45001
BUREAU VERITAS
Certification



Certificates

BUREAU VERITAS
Certification

DUBAI SHIPBUILDING & ENGINEERING LLC
P. O. BOX 35515 PLOT SR-15, INSIDE DMC PORT, DUBAI,
UNITED ARAB EMIRATES.

Bureau Veritas Certification Holding SAS – UK Branch certifies that the Management System of the above organisation has been audited and found to be in accordance with the requirements of the management system standards detailed below

ISO 9001:2015
Scope of Certification

MANUFACTURE, INSTALLATION & MAINTENANCE FOR SHIPBUILDING; REPAIRING & CONVERSION OF SHIPS, MANAGEMENT OF DESIGN OF SHIPS.

Original cycle start date: **4th MAY 2020**
Expiry date of previous cycle: **NA**
Certification Audit date: **9th DECEMBER 2019**
Certification cycle start date: **4th MAY 2020**
Subject to the continued satisfactory operation of the organization's Management System, this certificate expires on: **3rd MAY 2023**
Certificate No. **MER20.222/UQ** Version No. 1, Revision date: **04/05/2020**

Signed on behalf of BVCH SAS UK Branch

Certification body address: 6th Floor, 66 Prescott Street, London E1 8HG, United Kingdom
Local office: Bureau Veritas – Dubai Br., 2nd Floor, Block C, Al Hudayba Awards Building, Jumeirah Road with 2nd December Interchange, Dubai, U.A.E.
Further clarifications regarding the scope of this certificate and the applicability of the management system requirements may be obtained by consulting the organisation.
To check this certificate validity please call: 00971 4 3074400

BUREAU VERITAS
Certification

DUBAI SHIPBUILDING & ENGINEERING LLC
P. O. BOX 35515 PLOT SR-15, INSIDE DMC PORT, DUBAI,
UNITED ARAB EMIRATES.

Bureau Veritas Certification Holding SAS – UK Branch certifies that the Management System of the above organisation has been audited and found to be in accordance with the requirements of the management system standards detailed below

ISO 14001:2015
Scope of Certification

MANUFACTURE, INSTALLATION & MAINTENANCE FOR SHIPBUILDING; REPAIRING & CONVERSION OF SHIPS, MANAGEMENT OF DESIGN OF SHIPS.

Original cycle start date: **4th MAY 2020**
Expiry date of previous cycle: **NA**
Certification Audit date: **9th DECEMBER 2019**
Certification cycle start date: **4th MAY 2020**
Subject to the continued satisfactory operation of the organization's Management System, this certificate expires on: **3rd MAY 2023**
Certificate No. **MER20.222/UE** Version No. 1, Revision date: **04/05/2020**

Signed on behalf of BVCH SAS UK Branch

Certification body address: 6th Floor, 66 Prescott Street, London E1 8HG, United Kingdom
Local office: Bureau Veritas – Dubai Br., 2nd Floor, Block C, Al Hudayba Awards Building, Jumeirah Road with 2nd December Interchange, Dubai, U.A.E.
Further clarifications regarding the scope of this certificate and the applicability of the management system requirements may be obtained by consulting the organisation.
To check this certificate validity please call: 00971 4 3074400

BUREAU VERITAS
Certification

DUBAI SHIPBUILDING & ENGINEERING LLC
P. O. BOX 35515 PLOT SR-15, INSIDE DMC PORT, DUBAI,
UNITED ARAB EMIRATES.

Bureau Veritas Certification Holding SAS – UK Branch certifies that the Management System of the above organisation has been audited and found to be in accordance with the requirements of the management system standards detailed below

ISO 45001:2018
Scope of Certification

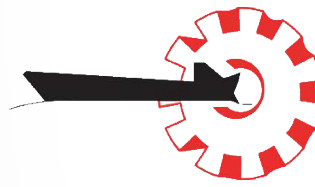
MANUFACTURE, INSTALLATION & MAINTENANCE FOR SHIPBUILDING; REPAIRING & CONVERSION OF SHIPS, MANAGEMENT OF DESIGN OF SHIPS.

Original cycle start date: **4th MAY 2020**
Expiry date of previous cycle: **NA**
Certification Audit date: **9th DECEMBER 2019**
Certification cycle start date: **4th MAY 2020**
Subject to the continued satisfactory operation of the organization's Management System, this certificate expires on: **3rd MAY 2023**
Certificate No. **MER20.222/UOH** Version No. 1, Revision date: **04/05/2020**

Signed on behalf of BVCH SAS UK Branch

Certification body address: 6th Floor, 66 Prescott Street, London E1 8HG, United Kingdom
Local office: Bureau Veritas – Dubai Br., 2nd Floor, Block C, Al Hudayba Awards Building, Jumeirah Road with 2nd December Interchange, Dubai, U.A.E.
Further clarifications regarding the scope of this certificate and the applicability of the management system requirements may be obtained by consulting the organisation.
To check this certificate validity please call: 00971 4 3074400

دبي للهندسة و صناعة السفن Dubai Ship Building & Engineering



Contact Us:

P.O Box : 35515

Location : Dubai, U.A.E / Dubai Maritime City

Tel : +971 4 423 4931

Fax : +971 4 4230 673

E-Mail : info@dsbe.ae

Website : www.dubaishipbuilding.ae

Ahmad N. SAIDI

Business Development

Mob : +971 50 5771019

E- mail : ahmad.saidi@dsbe.ae

